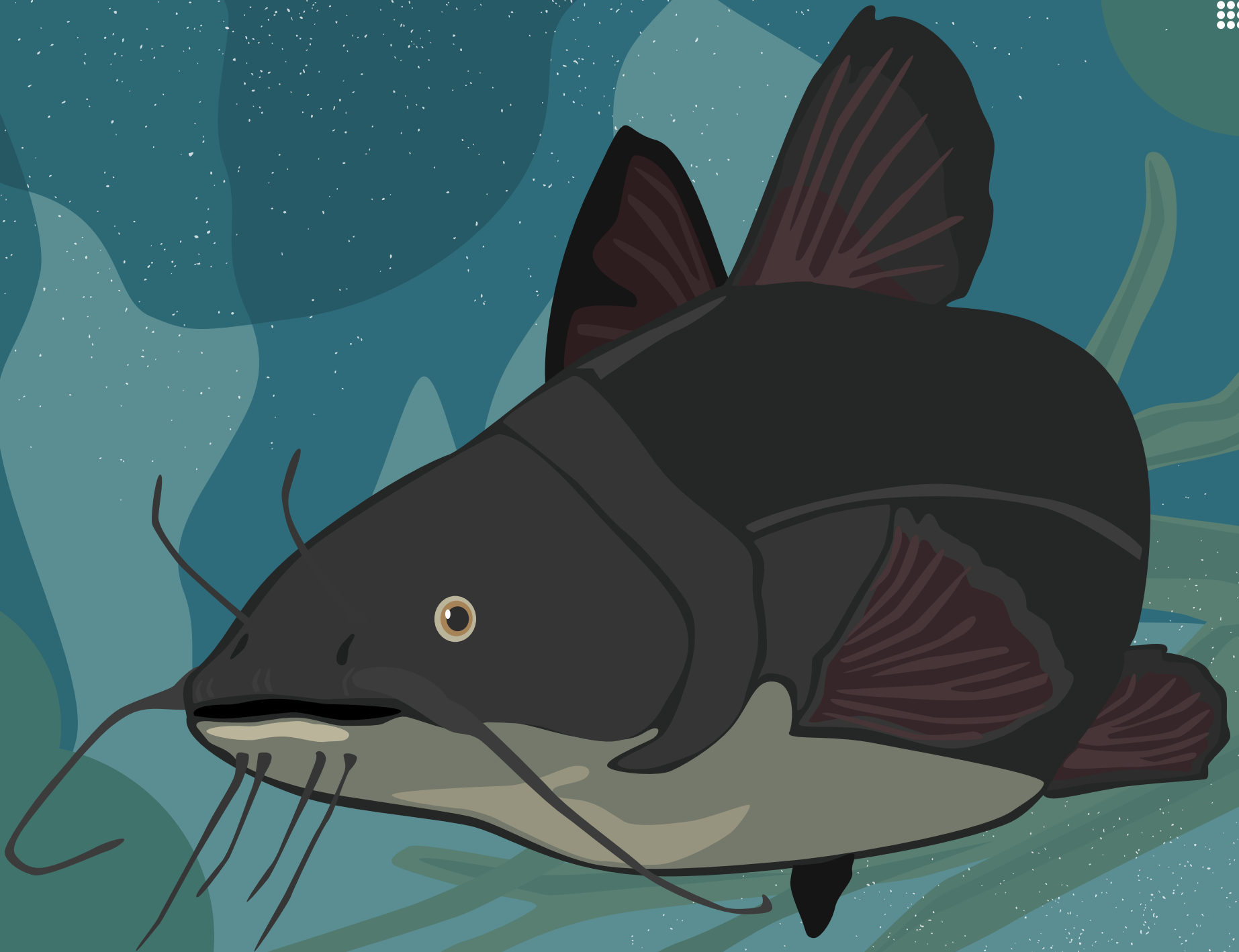
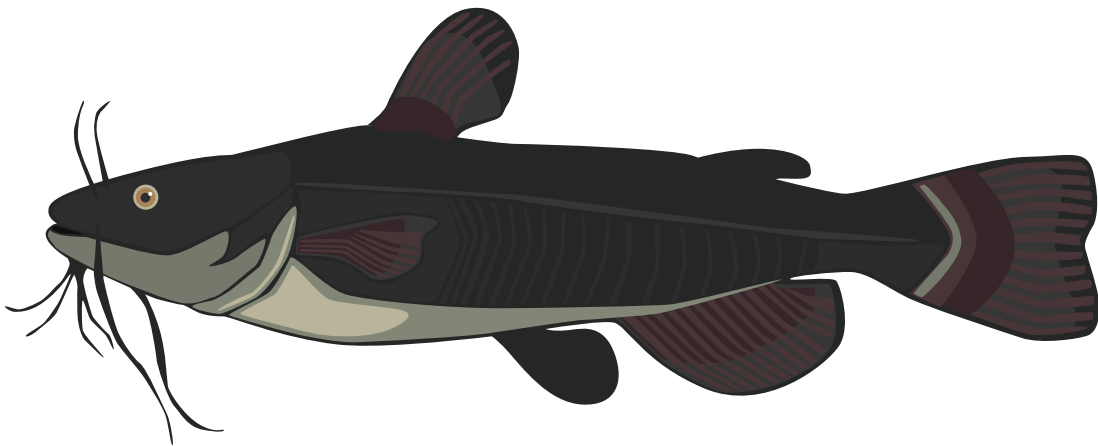


**I SPY
WITH
FRANCIS
PAVY**





CATFISH

HABITAT

Inhabits most lakes, ponds, rivers, and backwaters in Louisiana.

FOOD

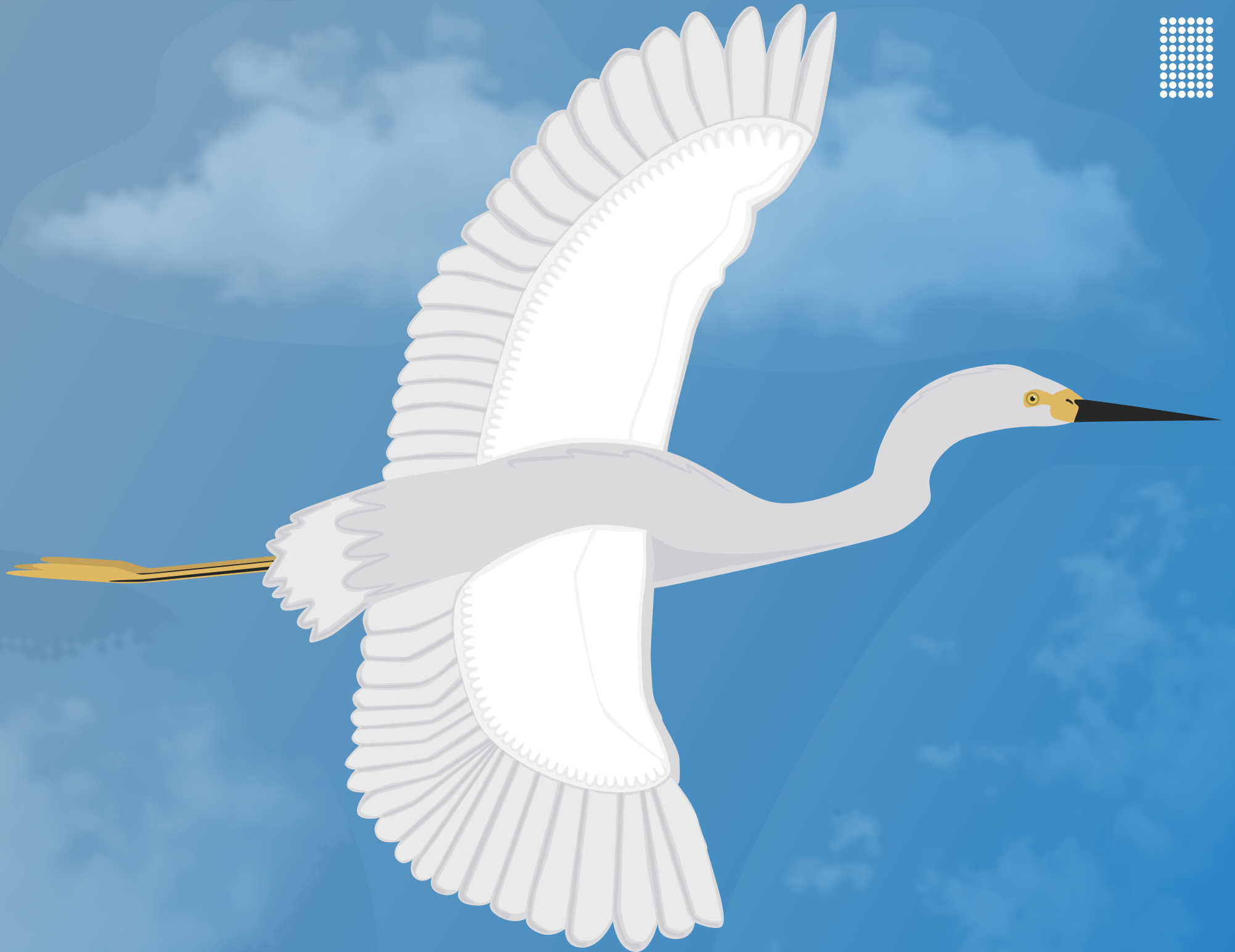
Catfish are considered bottom feeders and will eat anything they can get in their mouths. They are mostly carnivorous, eating other fish, insects, worms, frogs, and newts.

SIZE

Catfish can range in size from less than a pound to over a hundred pounds, and measure up to 8 feet long!

INTERESTING FACTS

- Strongest sense is smell.
- Can live to be between 8 and 20 years old.
- Have about 100,000 taste buds across its skin.
- The U.S. consumes nearly 447 million pounds of catfish per year.
- In Louisiana alone, Catfish is a \$4 billion industry and employs over 10,000 people.





GREAT EGRET

HABITAT

Inhabits freshwater, brackish, and marine wetlands. They hunt in marshes, swamps, streams, rivers, ponds, lakes, and lagoons.

FOOD

Eats mainly small fish, but also eats amphibians, reptiles, birds, small mammals, and invertebrates such as crayfish, worms, and insects.

SIZE

Weight: 35.3 oz; 1000 g

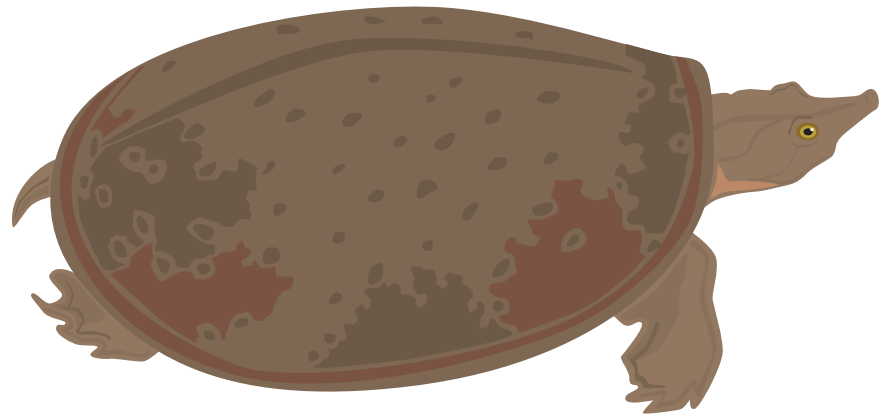
Length: 37–40.9 in (3ft.)

Wingspan: 51.6–57.1 in (5ft.)

INTERESTING FACTS

- The Great Egret was once prized for its *aigrettes*, the long plumes that grow on its back during egg-laying season. They were nearly hunted to extinction when these plumes were used as adornments for ladies' hats.
- Great Egrets fly slowly but powerfully: with just two wingbeats per second their cruising speed is around 25 miles an hour.
- In 1938, Edmund McIlhenny founded Avery Island's bird sanctuary in part to protect Egrets from plume hunters.





GULF COAST SPINY SOFTSHELL TURTLE

HABITAT

Inhabits various freshwater sources such as rivers, lakes, marshes, farm ponds, and bays of larger lakes.

FOOD

Softshell turtles are carnivores that prey mostly on invertebrates, such as crayfish and aquatic insects. Larger turtles occasionally prey upon small fish.

SIZE

Weight: Females weigh up to 26 pounds
Length: Males: 5-9.5 in.; Females: 9.5-19 in.

INTERESTING FACTS

- Their feet are webbed for swimming, with their toes ending in claws.
- Large females can live up to 50 years.
- They are diurnal animals, meaning they are awake during the day, and because they are cold blooded, they spend their days basking in the sun as they forage for food.





HONEY BEE

HABITAT

Honey bees build hives inside the holes of trees and rock crevices. They make the hives with wax they groom off their own bodies.

FOOD

Eat mostly pollen and nectar from all types of flowers. During the winter, when it is too cold to fly, they eat the honey stored inside their hive.

INTERESTING FACTS

- The Honey Bee is the official state insect of Louisiana
- Honey Bees fly at 15 miles per hour.



BLACK SWALLOWTAIL BUTTERFLY

HABITAT

Can survive any altitude from sea-level to high mountains. Prefers fields, suburbs, and meadows.

FOOD

Caterpillars: Favorite foods are dill and parsley. Also eats citrus plants.
Butterflies: Survive off flower nectar.

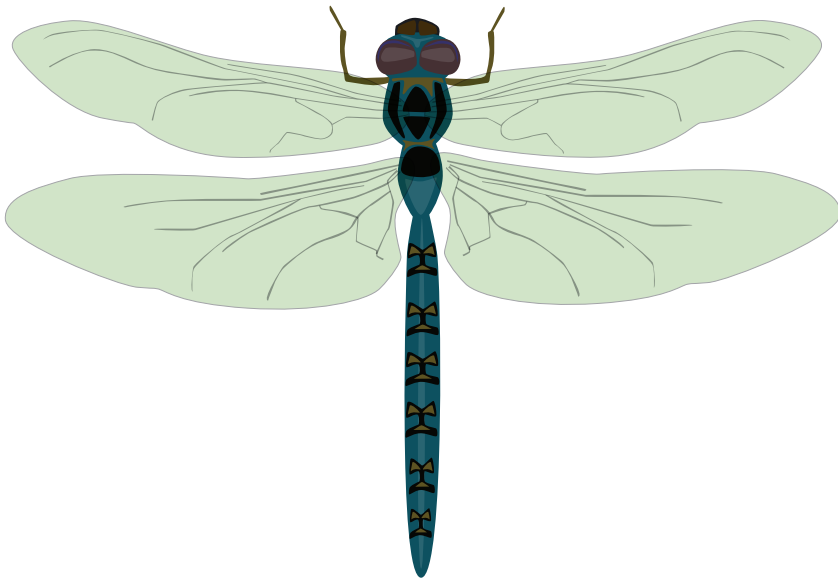
SIZE

Wingspan: 2.5in – 4.5in

INTERESTING FACTS

- Caterpillars can consume up to 27,000 times their own weight before metamorphosing into butterflies.
- Butterflies are identifiable by the pupil-in-iris look of the black dot inside an orange circle on the bottom of each wing.





BLUE DASHER DRAGONFLY

HABITAT

Inhabits slow-moving water sources such as marshes and ponds.

FOOD

Eats mainly smaller insects, especially mosquito larvae.

INTERESTING FACTS

- Blue Dashers are one of the most abundant dragonflies in the U.S.
- One Blue Dasher can consume over one hundred smaller insects in one day.
- Baby Blue Dashers are not blue. They have green and yellow stripes.
- Can fly between 18 – 35 miles per hour.
- Can see the ultraviolet light spectrum, meaning they can see more colors than humans.